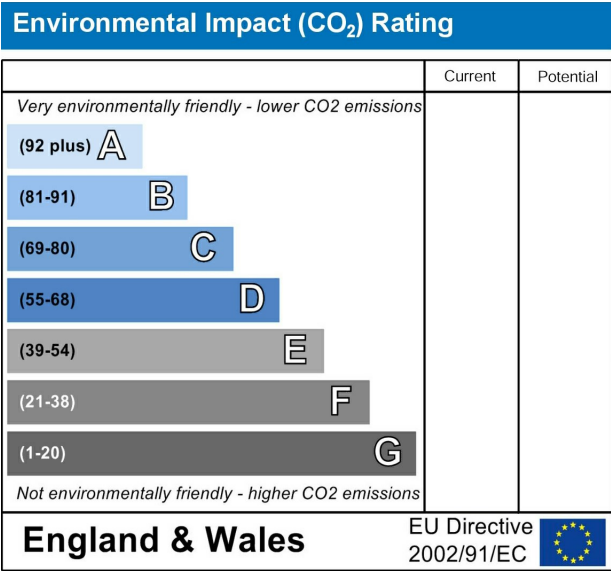
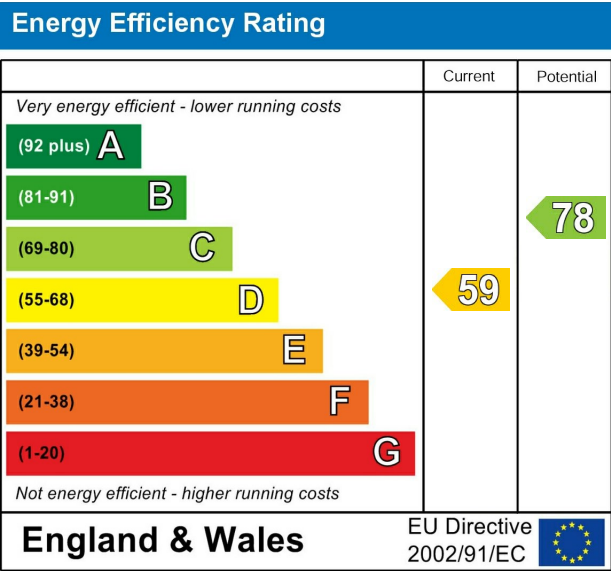


**Dunstall Way, West Molesey, Surrey, KT8 1PD**



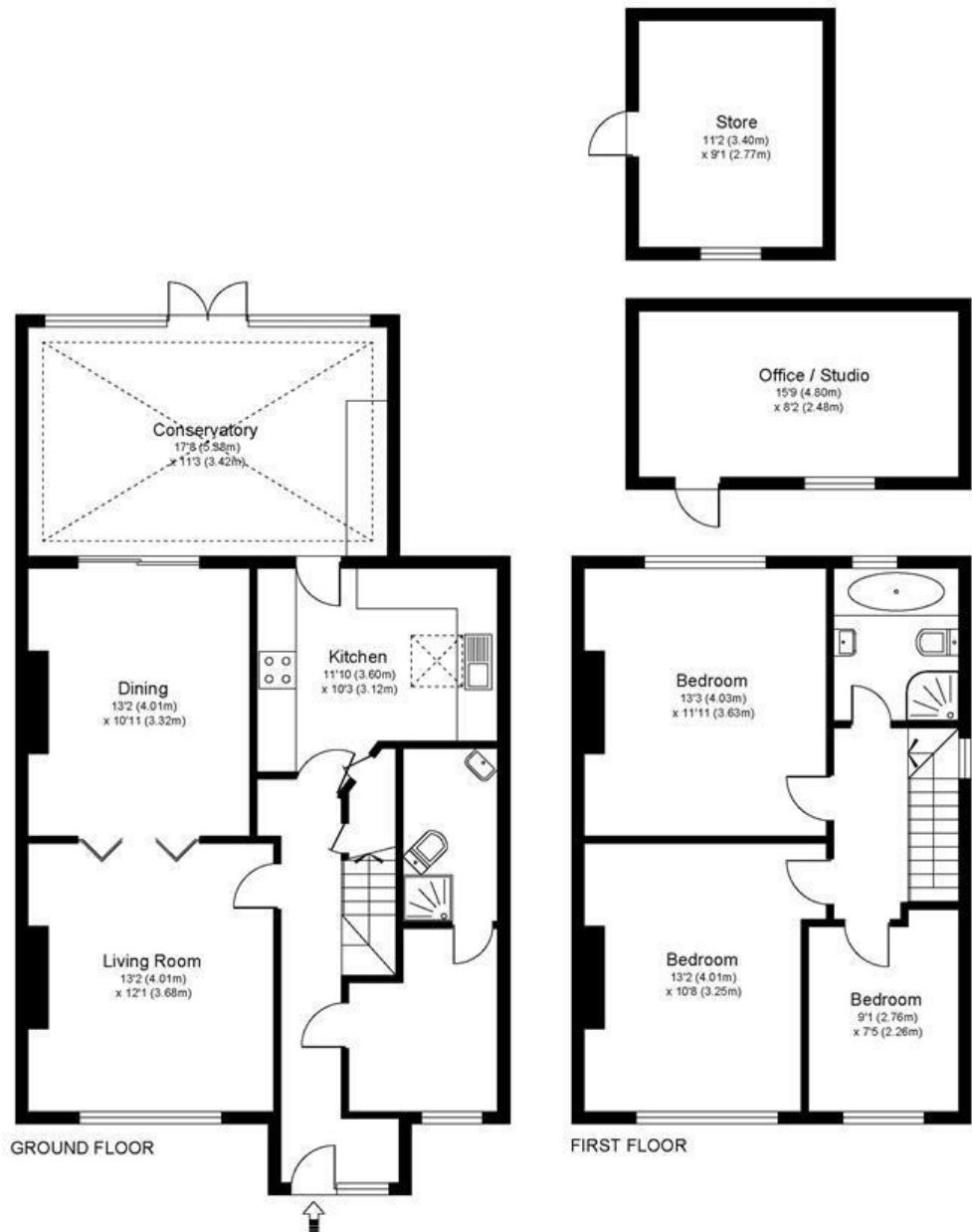
**£700,000 Freehold**

Harmes Turner Brown are pleased to offer to the market this three bedroom semi detached family home which is situated in a popular residential road. The property is well presented throughout and provides good potential to extend stpp. The accommodation briefly comprises entrance hallway, study/bedroom four with en-suite shower room, lounge, separate dining room, modern fitted kitchen leading to summer room opening onto rear garden. Upstairs there are three bedrooms, two double and a good sized single and a modern family bathroom. Externally the property boasts a secluded rear garden which is approximately 80ft in length, garden workshop with power separate garden shed and to the front off street parking for two cars. Viewings are strongly recommended at your earliest convenience by contacting our East Molesey office on 0208 001 8385.



Dunstall Way, West Molesey, Surrey, KT8 1PD

DUNSTALL WAY, WEST MOLESEY KT8



Approximate Gross Internal Floor Area: 119 m sq / 1282 sq ft  
Office & Store Area: 22 m sq / 233 sq ft  
Total Area : 141 m sq / 1515 sq ft

Whilst every attempt has been made to ensure the accuracy of the floor plan contained here, measurements of doors, windows and rooms are approximate and no responsibility is taken for any error, omission or misstatements. These plans are not to scale and are for representation purposes only as defined by RICS Code of Measuring Practice and should be used as such by any prospective purchaser. Specifically no guarantee is given on total square footage of the property if quoted on this plan. Any figure given is for initial guidance only and should not be relied on as a basis of valuation.

- SEMI DETACHED HOUSE
- TWO BATHROOMS
- POTENTIAL TO ADD MORE SPACE STPP
- GAS CENTRAL HEATING
- 80FT REAR GARDEN
- THREE / FOUR BEDROOM
- POPULAR RESIDENTIAL ROAD
- DOUBLE GLAZING
- OFF STREET PARKING

This plan is a representation of the property and measurements, where given, are approximate. None of the fixtures and fittings have been tested by us. These details are thought to be materially correct but we cannot guarantee there are no error and emissions and they do not form part of any contract

